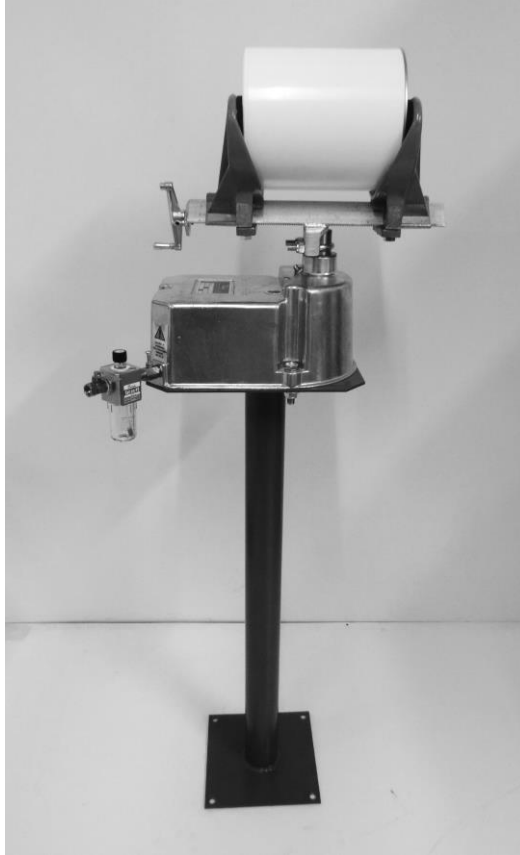


PROSHAKER



E19210A

Fillon
Technologies™

SUMMARY/SOMMAIRE


ENPage 3 to 17

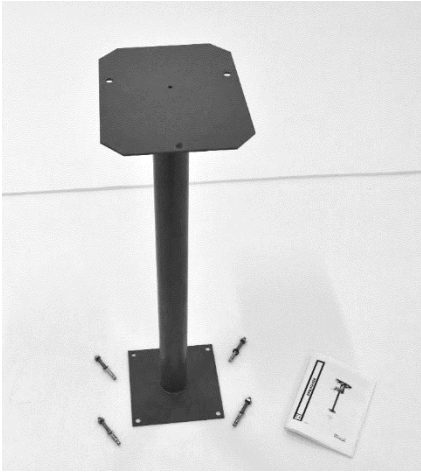
FRPage 18 to 32

SUBSIDIARIES.....Page 33

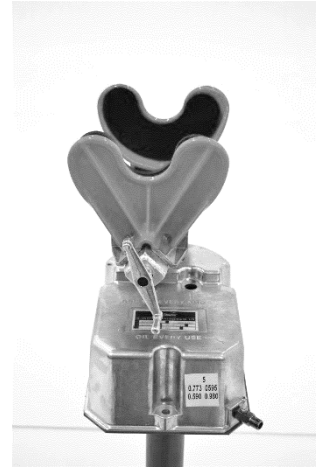


Read carefully and follow the user's manual instructions

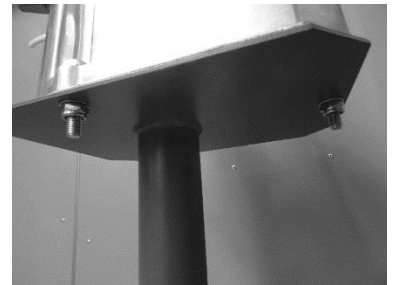
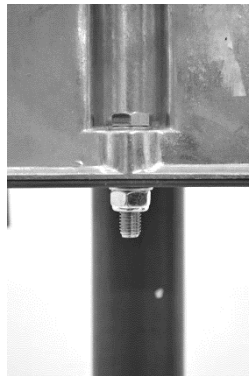
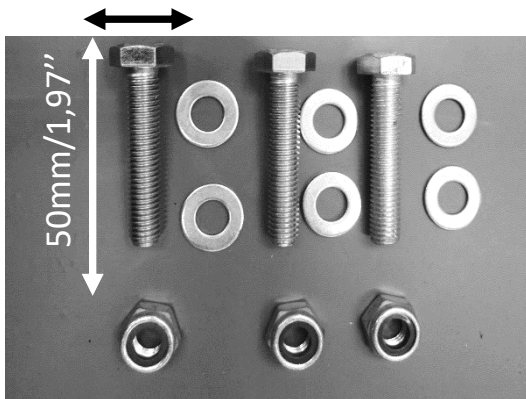
 Central hole in front



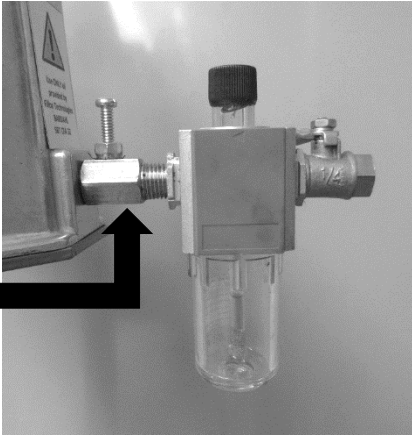
1- Fix the Proshaker on the ground thanks to the 4 provided screws



2 - Install the Proshaker on the pedestal



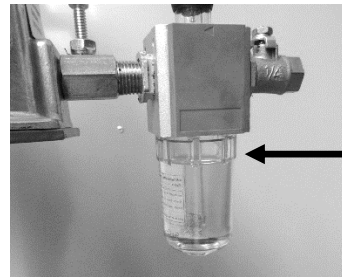
3 – Screw the Proshaker on the pedestal, by putting a washer on the top and the other below the pedestal.



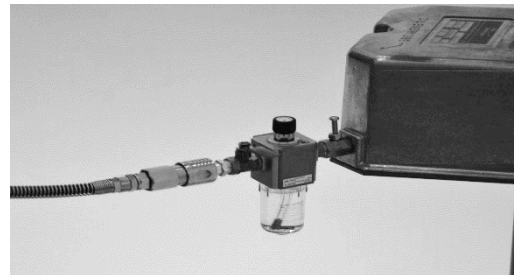
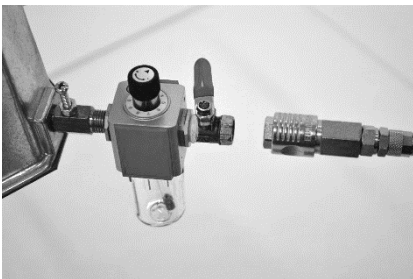
4 – Oiler setting up, thread sealing to be performed by the user



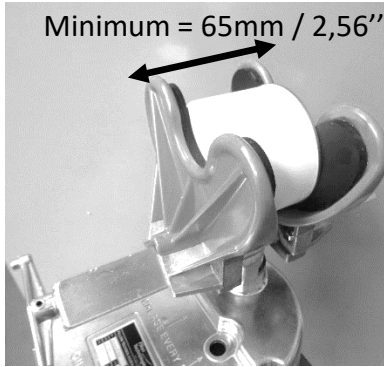
5 – Unscrew the oil receptacle



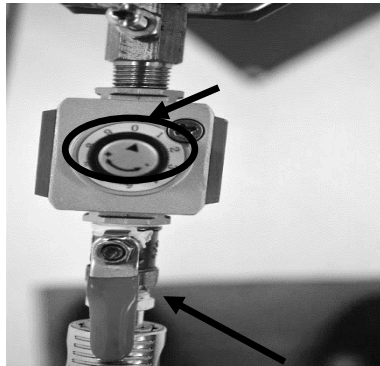
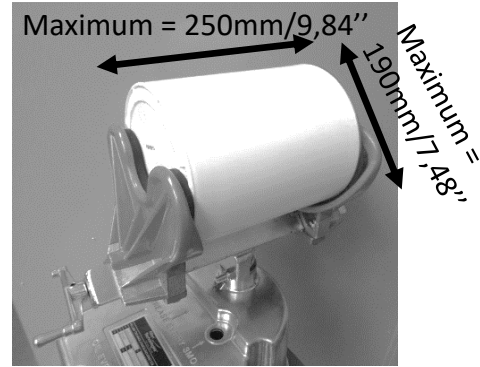
6 – Use only the oil supplied by Fillon Technologies. Fill up to the maximum oil level.



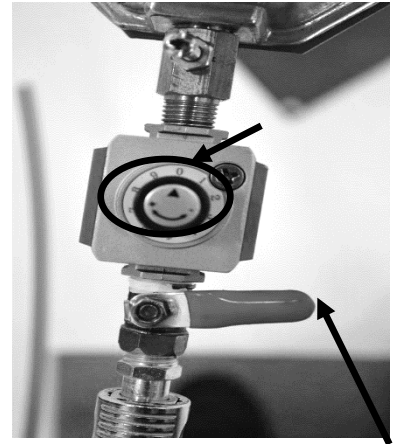
7 – Connect the device using a suitable connection to your air network installation
(pressure : 5 to 8 bars / 70 to 120 Psi)



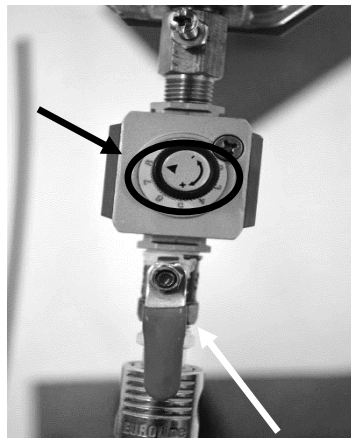
8 – It is forbidden to operate the appliance empty. Secure the box thanks to the crank allowing the adjustment of the clamps. Always watch the paint product cans during the shaking process to make sure there are no leaks and that they are well maintained.



9 – Operating the device: valve in open position, oil setting to 0.



10 – Valve in closed position - OIL setting on 0: **OFF**



11 – Once (1) x per week, valve in open position, oiler setting on 8 for 3 seconds (oiling performed automatically) and reset the adjustment knob to 0.



Important: Before using the equipment for the first time, read and follow these instructions carefully to ensure proper operation of your New Paint Shaker. The limited warranty does not cover damage(s) caused by a wrong use of the device such as an incorrect pressure, neglect, excess or lack of lubrication.

WARNING

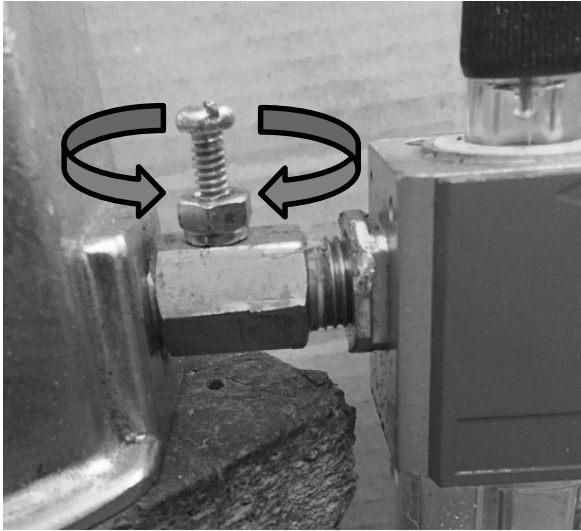
1. The Proshaker is designed to be used by trained professionals in an industrial work-area where public access is prohibited. The manufacturer doesn't assume the responsibility concerning sales or use for other purposes.
2. KEEP CHILDREN AWAY. Children must never be allowed in the work area.
3. Make sure that the lid is securely closed before positioning cans on the proshaker.
4. DO NOT USE THIS MACHINE in damp or poorly lit conditions
5. The utilized cans (from 0,5L to 5 liters) must be compatible with the PROSHAKER and should not be deformed or modified.
6. STORE IDLE EQUIPMENT. When not in use, this tool must be locked up in a dry location to inhibit rust.
7. DO NOT PUSH THIS MACHINE beyond its specified capacity or use for a purpose for which it is not intended.
8. DRESS APPROPRIATELY. Do not wear loose clothing or jewelry. Long hair must be attached and non-hanging.
9. USE LOCALLY APPROVED PROTECTION EQUIPMENT. Always use chemical splash impact goggles and respirator adapted to the type of paint being used.
10. DO NOT REACH OVER OR ACROSS RUNNING MACHINES.
11. NEVER UNPLUG THIS MACHINE by pulling on air inlet hose.
12. ALWAYS RESPECT THIS MACHINE MAINTENANCE PLAN.
13. REMOVE ALL AJUSTING KEYS AND WRENCHES FROM THE MACHINE or machine work surface before starting or attaching the pressure hose.
14. AVOID UNINTENTIONAL STARTING
15. STAY ALERT do not operate this machine if you are tired or under the influence of alcohol or drugs. Read warning labels on prescriptions to determine if your judgement or reflexes are impaired while taking medication, if there is a doubt, do not operate the machine.
16. CHECK DAMAGED PARTS carefully to determine that the machine will perform its intended function. Verify the alignment and binding of moving parts. Damaged parts should be repaired or replaced by a qualified technician.
17. USE ONLY accessories and replacement parts intended for use with this machine. Use of any other parts will void warranty. Replacement parts are available from FILLON TECHNOLOGIES.
18. DRAIN THE COMPRESSOR EVERY DAY. Do not allow moisture to build up inside of the compressor.
19. MAKE SURE ALL THE EQUIPMENT IS RATED TO THE APPROPRIATE CAPACITY. Make sure that regulator is not set at more than 1200 PSI (8 bars),

Speed adjustment (air flow setting):

The PROSHAKER is set at the factory for an optimal use with all types of cans.

If requested, it is possible to adjust the oscillation speed as follows:

Turn the screw clockwise to reduce airflow and reduce oscillation. In the same way, turn the screw counterclockwise to increase the speed. (note: proceed gradually)



Air pressure: When the line pressure is higher than 120 psi (8 bars) add a reducer upstream of the air hose. NEVER EXCEED 8 BARS.

Air consumption : Approximately 4,3 CFM (7m / h) free air with 4 liter can (0,88 gal.) at 30° shake angle.

Speed: Up to 700 cycles / minute at 30 ° shake angle.

Capacity : 0,5L to 5 liters cans , Maximum height = 250mm/9,84'', Minimum Height = 65mm/2,56'', Maximum width = 190mm/7,48'' – Maximum gross weight= 7kgs / 15,45lbs

Oil : Use the oil provided by Fillon Technologies, reference : HYYY1012

DO NOT USE another oil than the one supplied by Fillon Technologies.

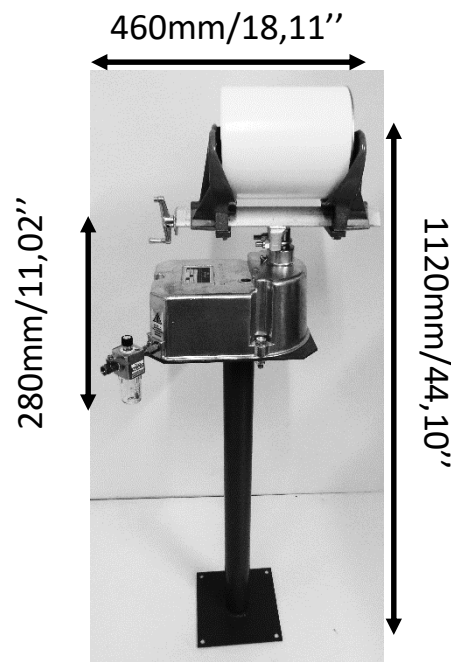
Grease: Multipurpose grease

Weight: Shaker, 8 kg (17,64 lbs); Pedestal 5,5 kg (11,02lbs)



Use ONLY oil
provided by
Fillon Technologies
BARDAHL
SBT CFA 32

E18770



Before starting any maintenance, make sure the PROSHAKER is disconnected from the air system.

Every three (3) months (more often in heavy use and / or dusty atmosphere), lubricate the pins with the two (2) grease nipples (fig.1 and 2) with a grease gun.

Rotate the box support to align the grease fitting to the chassis hole as shown below (fig.1),

Periodic inspection of the entire installation has to be conducted to ensure that it is securely fixed.

The unit should be cleaned regularly to ensure proper operation.



Fig.1

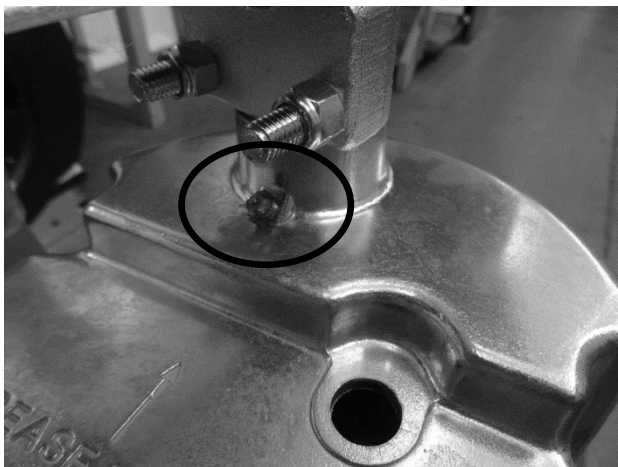


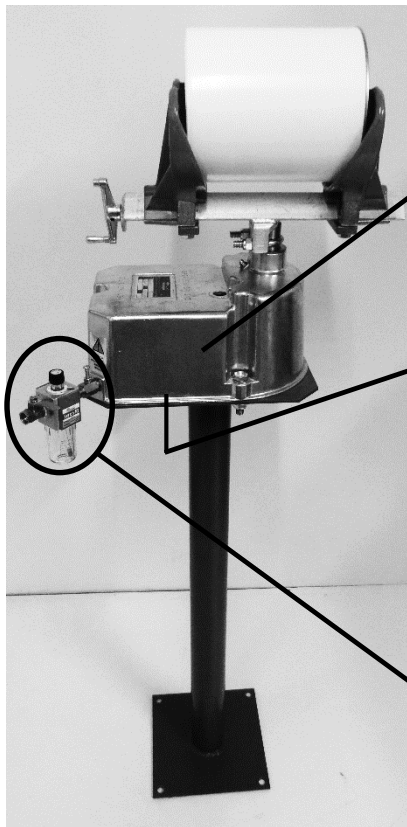
Fig.2

DYSFUNCTIONS	CAUSES & SOLUTIONS
Excessive Vibration / Noisy Machine	<ul style="list-style-type: none"> - Can over 7 kg (15,4 lbs) - Check all fixations are correct (on the ground + fixation of the different device parts) - Excessive air pressure (maximum : 8 bars/120 Psi) - Check that the can is correctly fixed on the support. If the clamps are not tight enough, set it thanks to the crank
Difficult starting / Works too slowly or stops	<ul style="list-style-type: none"> - Device not connected to air network - Insufficient air pressure - Valve in closed position - Lack of oil or inadequate oil (other than Fillon Technologies oil) – Restart an oiling operation
Oil leakages	<ul style="list-style-type: none"> - Check that the oiler button is set on position 0

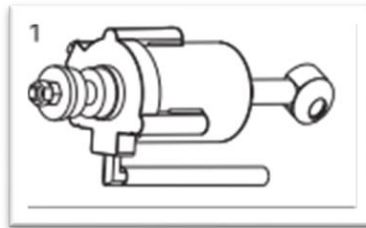
TO ORDER A SPARE PART

Fillon Technologies™			
Fillon technologies 28210 Faverolles France			
REF.		NO.	
DATE		TYPE	I(A)
P (W)		U (V)	Hz

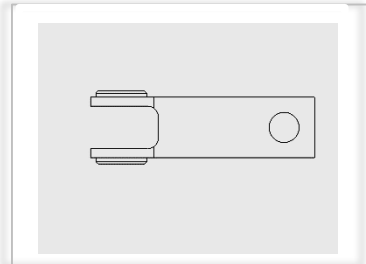
GB – TO ORDER A SPARE PART: MENTION ALL INFORMATION INDICATED ON THE IDENTIFICATION PLATE, THE PART ITEM NUMBER GIVEN ON THE MANUAL, AND THE QUANTITY.



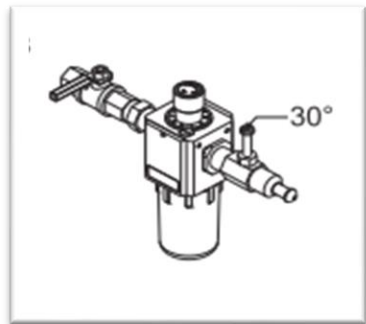
Kit 1



Kit 2



Kit 3



Proshaker oil kit = HYYY1016