

JM220

Service Manual



FF
Fillon Pichon

CONTENTS

	Page
- The Equipment	2
- Assembly & Installation	4
- Commissioning & Operation	7
- Routine & Electrical Maintenance	8
- Parts replacement	9
- Parts lists	10
- Summary of CAUTIONS	16
- Warranty	(INSIDE BACK COVER)

MIX UNIT - JM220

- DRIVE UNIT	- Ref. : Y00.JM04.02
- MIX-SHELF 11 CANS	- Ref. : Y00.A114.01
- MIX-SHELF 16 CANS	- Ref. : Y00.A116.01

THE EQUIPMENT

MIX UNIT - JM220

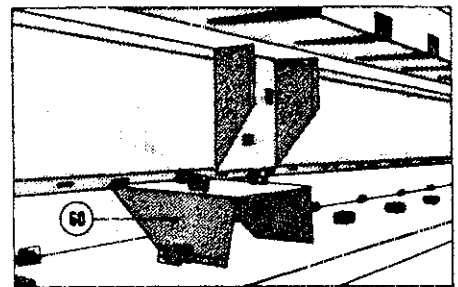
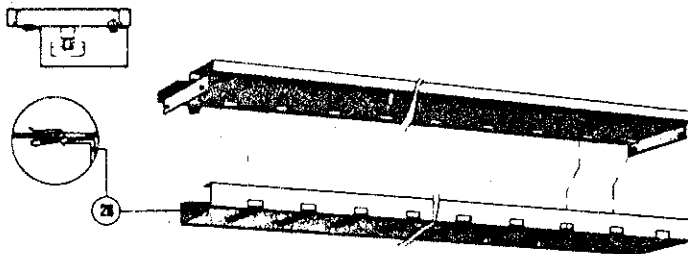
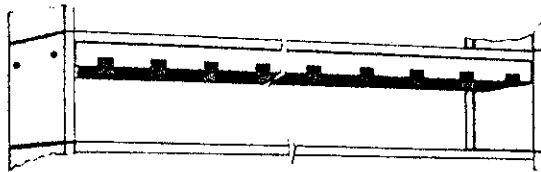
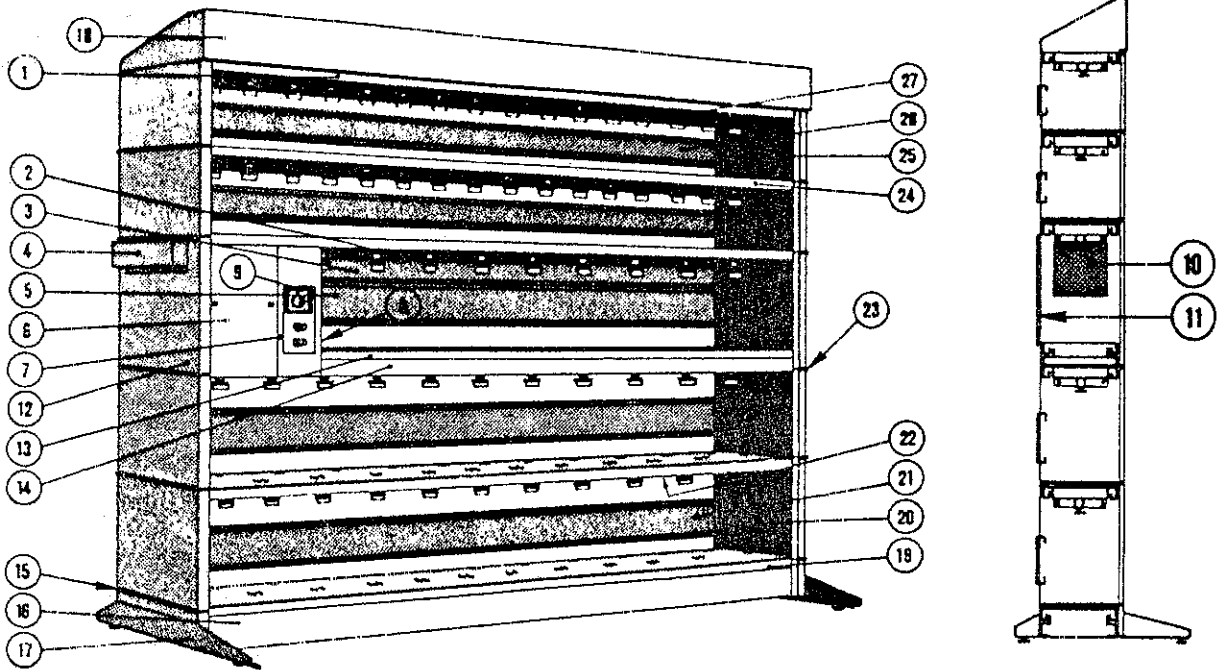


Diagram represents only one of the several possible combinations of modular elements you may construct.

THE EQUIPMENT

Your JM 220 mix unit is shipped in two or more pre-assembled parts, according to the number of mix-shelves ordered :

1. The drive unit, together with the base frame (16), adjustable feet (17), and header board (18). The fully Approved electrical motor is ready mounted.
2. Additional Mix-shelves, each fully assembled and separately shipped.
Two types :
 - 11 x 1 gallon mix-shelf
 - 16 x 1 quart mix-shelf

You may mount as many mix-shelves as you require, in any configuration of 11 can or 16 can shelves.

CAUTION : The top shelf should not be so high as to make access difficult. Do not handle heavy cans above head level.

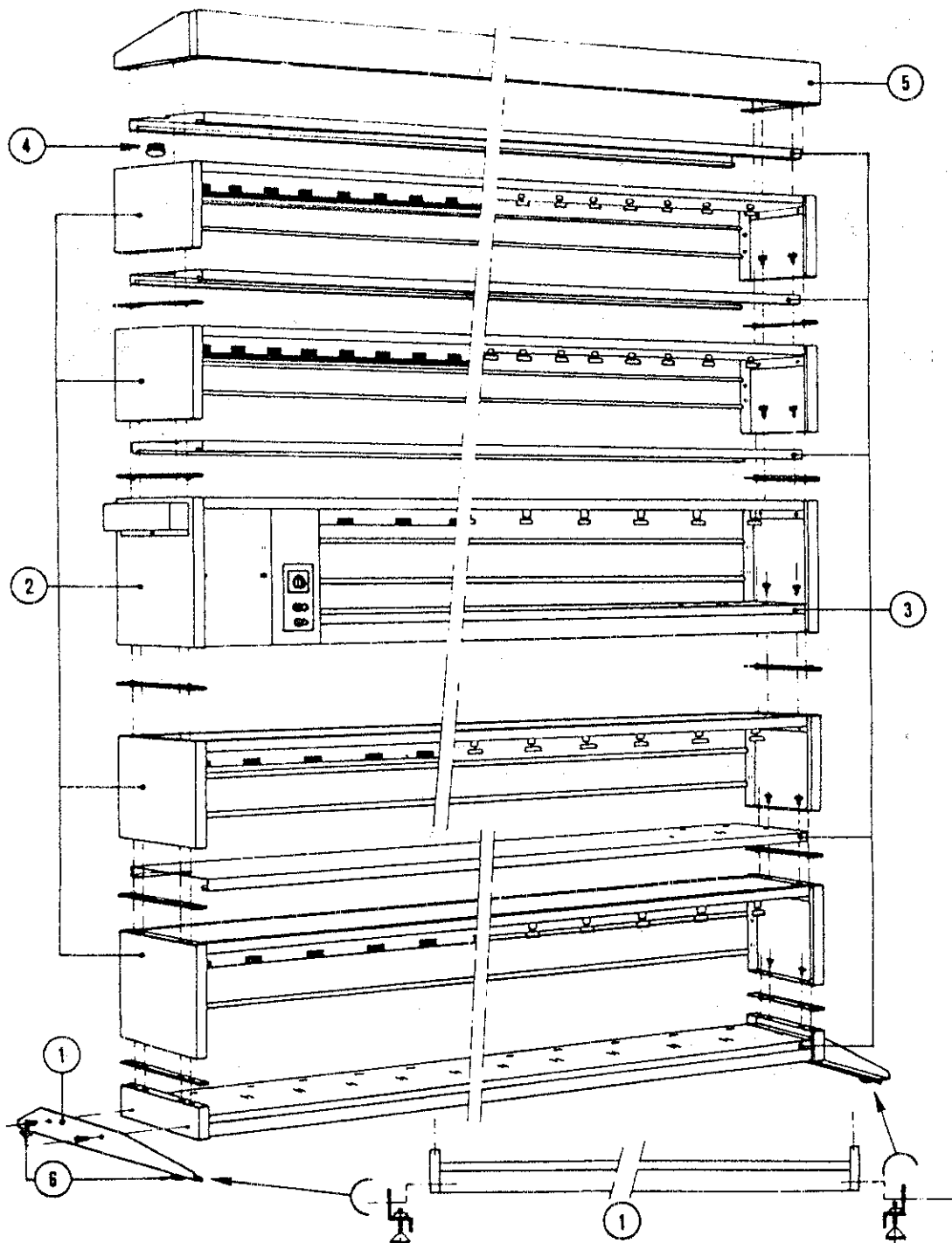
3. Control box, mounted on the base unit, is connected to the motor, and cable is fully adjusted.

CAUTION : Electrical connections and installation must be carried out in accordance with all Federal, State, and local regulations, and only by a fully qualified electrician.

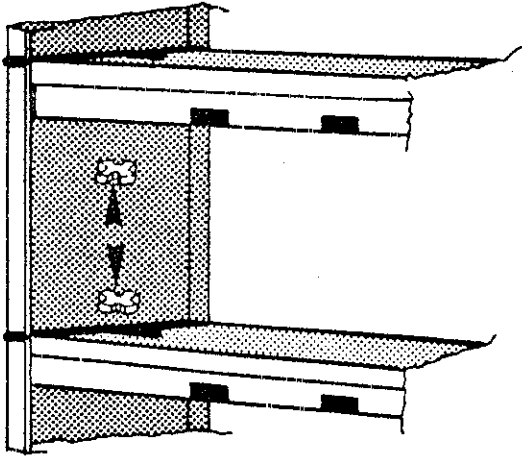
Optional

- .. Detachable Quart platforms, enabling quart cans to be mounted at gallon stations, can be ordered individually, and may be shipped separately or with the base unit or with the mix-shelf.
- .. Agitator lids, in gallon or quart sizes, incorporating safety handles and Patent flow control system, are ordered and shipped separately.

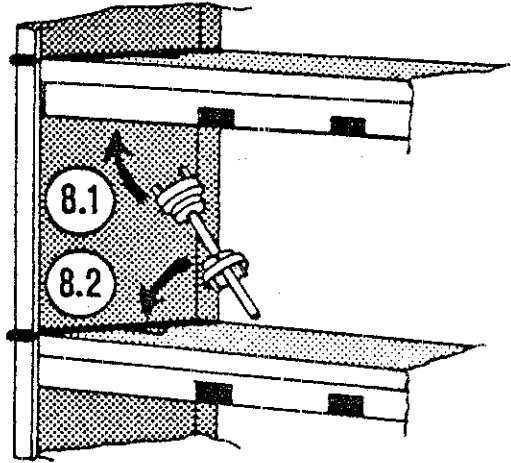
ASSEMBLY & INSTALLATION



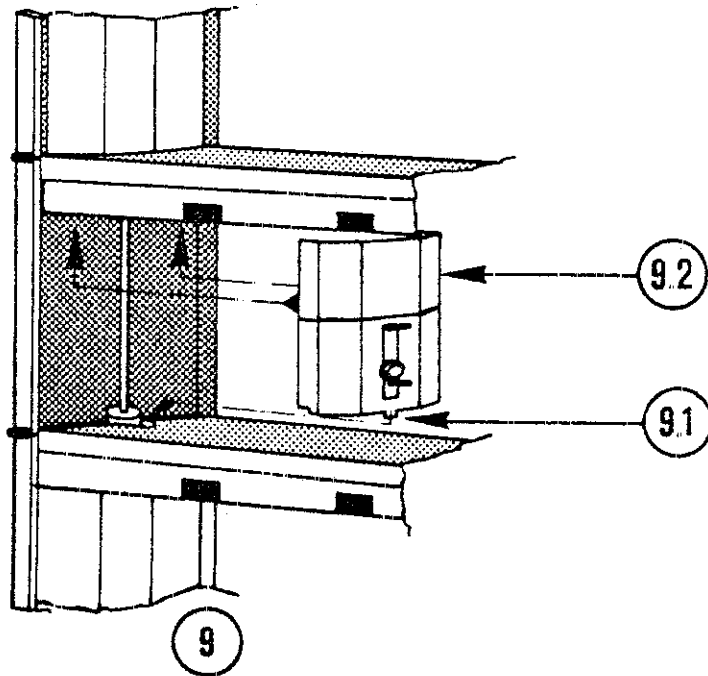
ASSEMBLY & INSTALLATION



7



8



9

ROUTINE & ELECTRICAL MAINTENANCE

CAUTION : Before removing any protective covers, and prior to any maintenance or repair operation, make sure the unit is switched OFF (disconnect the unit, if possible).

Your mix unit will serve you longer, and risk of accidents will be reduced, if regular maintenance is carried out.

DAILY : Remove all dust and paint residues after each use of the mix-unit, or at the end of the day. Use a standard, non-abrasive thinner. NEVER USE WATER TO WASH DOWN THE MIX-UNIT.

MONTHLY : Check condition and tension of all mix-shelf drive belts. To adjust :

- use tension regulator 106 (see Page 13).

ANNUALLY: Check condition and tension of motor drive belt. Adjust belt by means of tension regulator 119 (see Page 13).

ELECTRICAL MAINTENANCE

CAUTION : Any check, adjustment, or repair to any electrical component (motor, connections, etc....) should be carried out only by a fully qualified electrician.

"IMPORTANT:

YOUR MIX UNIT IS FITTED WITH A FULLY APPROVED EXPLOSION-PROOF MOTOR. ANY REPAIRS MUST BE CERTIFIED IN CONFORMANCE WITH APPROVAL CONDITIONS.

BEFORE YOU CALL AN ELECTRICIAN TO INVESTIGATE A MOTOR PROBLEM, IT IS THEREFORE MOST IMPORTANT TO CALL FILLON PICHON USA INC..

FOR THE APPROPRIATE INSTRUCTIONS : 401 431 1580

PARTS REPLACEMENT

1. SPARE PARTS REPLACEMENT

1 - Drive cross-piece (101)

- 1.1 - Remove the shaft cover.
- 1.2 - Unscrew lower drive sleeve, push it up, and remove drive shaft.
- 1.3 - Replace defective cross-piece, reinstall shaft and protection cover.

2 - Mechanical shelf belt (108), drive block (102), adjustable tension regulator (106), fixed belt roller (107), pulley (109 or 133), autolube ring (110).

- 2.1 - To replace any of these parts, first remove the shaft cover (123), the shaft (124), and the slotted shelf of the mix-shelf involved.

NOTE : For the topmost shelf, remove the top cover.
Slacken belt (108) by loosening adjustable tension regulator (106) and fixed belt rollers (107).

2.2 - Mechanical shelf belt (108)

- Remove the defective belt and install new one. Make sure that it is correctly positioned with regard to the adjustable tension regulator (106) and the fixed belt rollers (107).
- Adjust the fixed belt rollers (107) to ensure correct belt tension.

2.3 - Drive block (102)

- Remove the shaft cover and shaft from the shelf immediately below the shelf involved.
- Remove belt (108) and replace defective block.

2.4 - Adjustable tension regulator (106)

Simply replace.

2.5 - Fixed belt rollers (107)

Unscrew to replace.

2.6 - Mechanical shelf pulley

- Remove protective driving device cover.
- Drive out pin (112) to release driving device.
- Replace pulley (109 or 133), and reinstall all parts in reverse order.

2.7 - Autolube ring (110)

- Remove protective driving device cover.
- Drive out pin (112) to release driving device.
- Remove ring, and reinstall all other parts in reverse order.

3. DRIVE BELT (114)

- 3.1 - Remove front panel of motor housing, then remove drive shaft.
- 3.2 - Slacken drive belt by loosening tension regulator (119). Replace belt, and reinstall all parts in reverse order.

PARTS LISTS

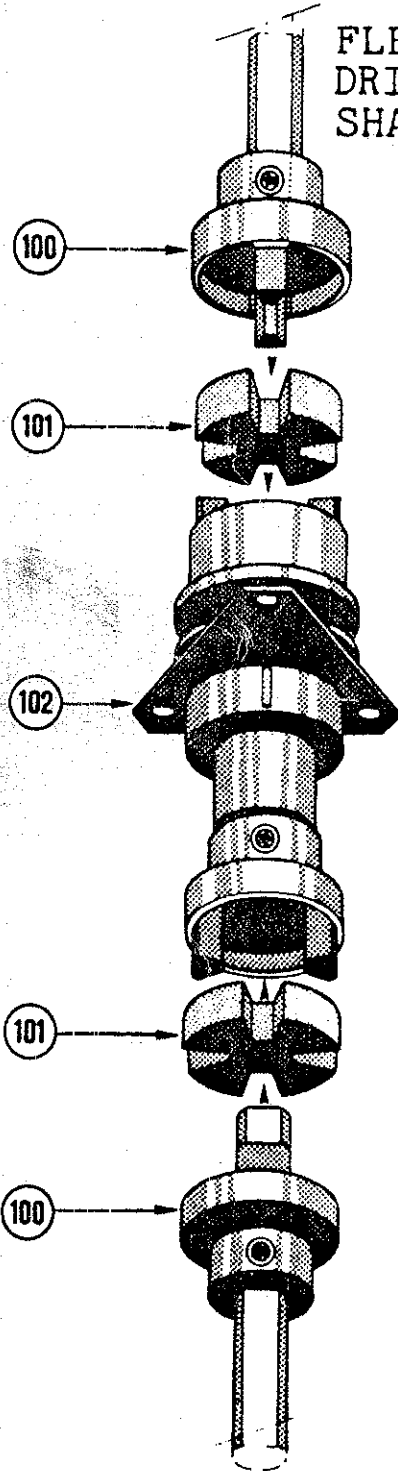
	Item	Description	No.
		<u>DRIVE UNIT JM220</u>	
	1	Upper shelf	13 12 01
	2	Modular mechanical shelf (with fittings) - drive unit stage : 9 cans JM	12 53 11
	3	Back plate H 72	19 02 14
	4	Pulley protection housing	19 01 09
	5	Back plate - modular JM for 9 detachable quart platforms	21 09 04
	6	Motor housing door	19 22 10
	7	Motor housing front panel	19 22 30D
	8	Motor housing side panel	19 22 40
	9	Mechanical control box, complete with cable - cable only, with fittings (403)	24 83 00 24 83 70
	10	Motor assembly Details : see mechanical parts	
	11	Rear motor cover JM	19 06 14
	12	Drive unit side panel JM - left - right	16 66 00D 16 67 00D
	13	Slotted shelf - Drive unit stage : 9 cans JM (1 gallon)	13 15 01
	14	Drive unit support frame	13 15 02D
	15	Plastic shelf spacers	04 20 06
	16	Base frame	15 23 00D
	17	Stabilizer feet kit - left - right	15 57 01D 15 57 02D
	18	Header plate	18 59 00
	28	Protective driving device cover - Drive unit stage : 9 cans JM	19 12 38

PARTS LISTS

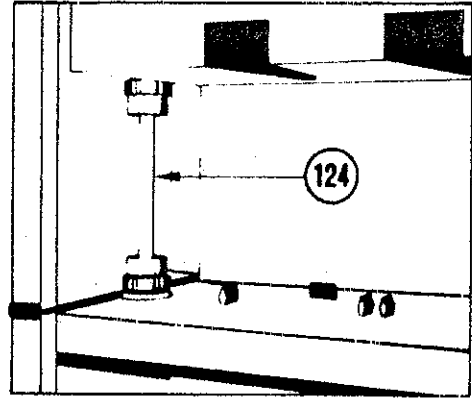
Item	Description	No.	
	<u>MIX SHELF : 11 CANS</u>		
19	Slotted shelf - modular stage : 11 cans (1 gallon)	13 12 02	
20	Modular side panel (large cans) - left - right	11 27 01D 11 27 02D	
21	Back plate H = 163 mm - modular large cans for 11 detachable quart platforms	21 09 01	
22	Modular mechanical shelf (with fittings) - modular stage : 11 cans (1 gallon)	12 45 11	
28	Protective driving device cover - modular stage : 11 cans	19 12 33	
23	Plastic shelf spacers	04 20 06	
	<u>MIX SHELF : 16 CANS</u>		
24	Slotted shelf - modular stage : 16 cans (1 quart)	13 12 03	
25	Modular side panel (small cans) - Left - Right	11 27 03D 11 27 04D	
26	Back plate H = 105 mm - modular small cans	19 02 11	
27	Modular mechanical shelf (with fittings) - modular stage : 16 cans (1 quart)	12 46 11	
28	Protective driving device cover - modular stage : 16 cans	19 12 34	
60	Quart platform - height 63 mm	21 05 01	

PARTS DIAGRAM

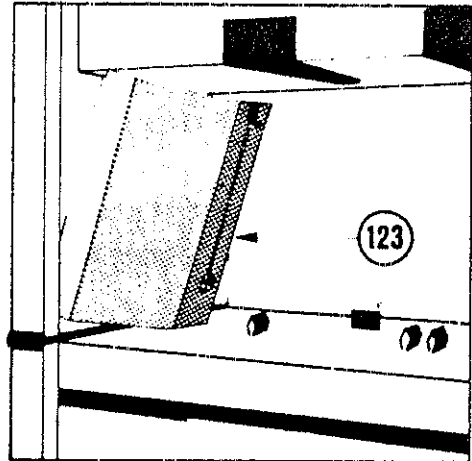
FLEXIBLE DRIVE SYSTEM SHAFT ASSEMBLY



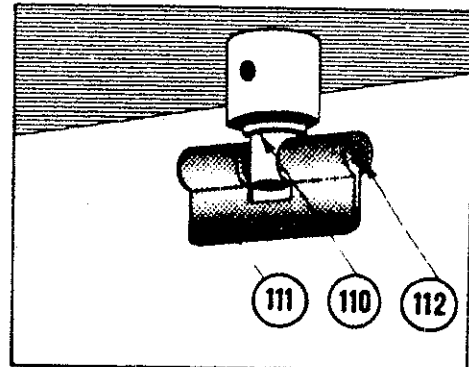
DRIVE SHAFT



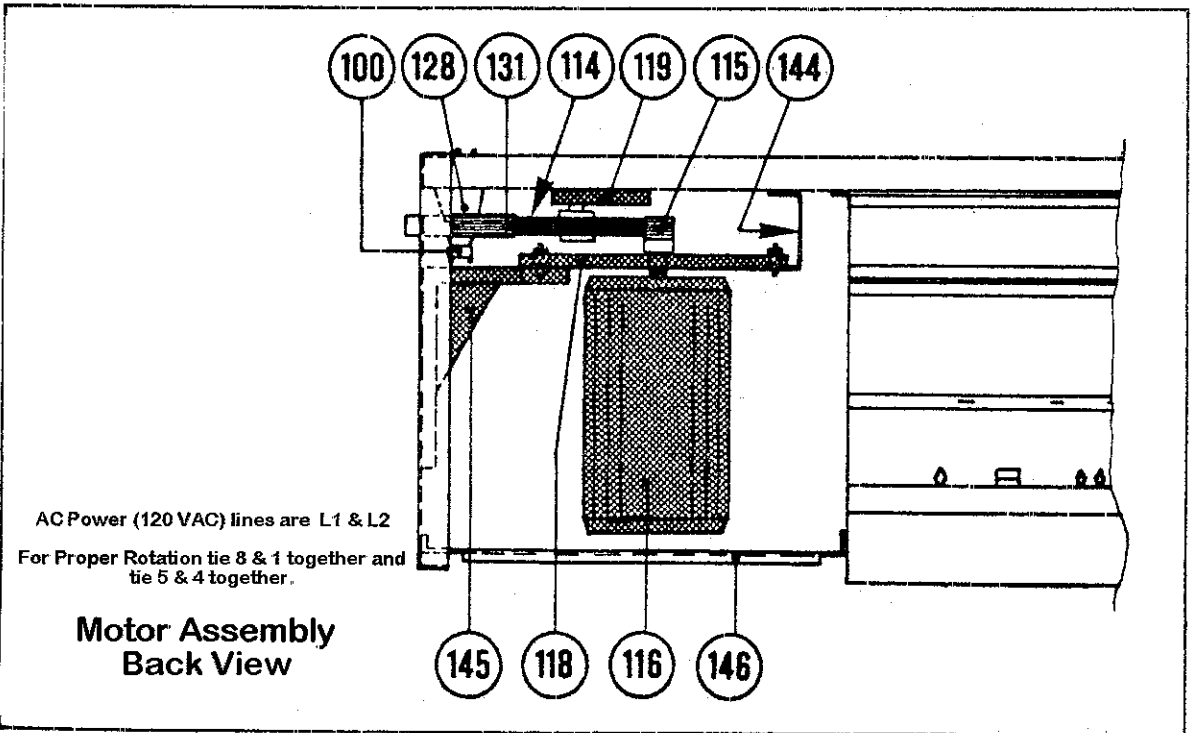
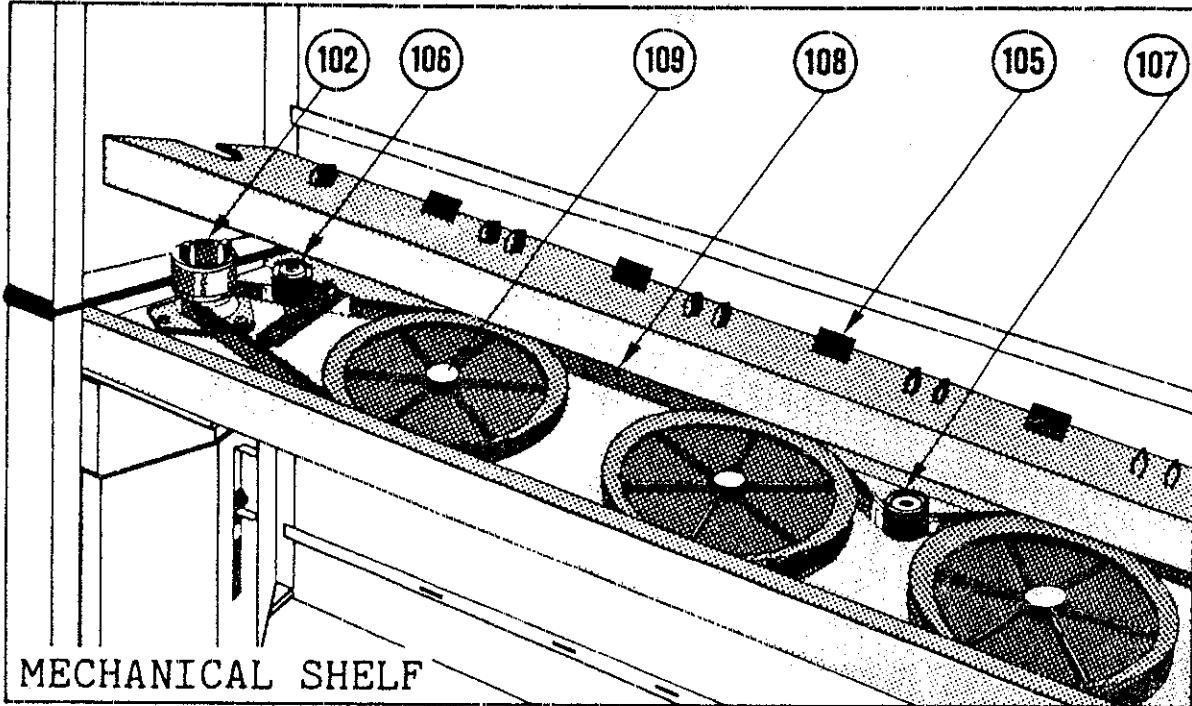
SHAFT COVER



DRIVING DEVICE



PARTS DIAGRAM



PARTS LISTS

Item	Description	No.	
100	Drive sleeve (with screw)	04 10 04D	
101	Drive cross piece	04 20 01	
102	Standard drive block	08 17 00	
105	Can clamp (bag of 25 pieces)	04 02 29E	
106	Adjustable belt regulator TR83	08 22 00	
107	Fixed belt roller	04 01 05D	
108	Mechanical shelf drive belt 4450	03 01 39	
109 & 133	Mechanical shelf pulley Ø 150 mm	04 20 03	
	Mechanical shelf pulley Ø 126 mm	04 20 04	
110	Self lubricating ring BP25..C 12x15x12mm	03 04 01	
111	Driving device	08 05 00	
112	Driving device pin	03 03 01	
114	Motor belt L = 711 mm	03 01 54	
115	Motor pulley POLY V 33	05 01 104D	
116	Explosion-proof single-phase motor 1 HP (with pulley) with built-in switch	06 01 70D	
	.. Silentblocs (with nuts)	03 02 03D	
	.. Ground wire	06 50 01	
118	Support bracket .. for motor with flange	20 34 10	
119	Motor belt regulator	08 33 00	
123	Shaft cover (Gallon can stage)	19 08 00D	
	Shaft cover (quart can stage)	19 08 10D	
124	Drive shaft 292 (drive unit)	29 2 292	
	Drive shaft 153 (quart can stage)	29 2 153	

PARTS LISTS

Item	Description	No.
	Drive shaft 213 (gallon can stage)	29 2 213
128	Drive block J80 with brace	08 19 00 05 01 92
131	Driven pulley POLY V 165 (with screw)	05 01 80D
144	Motor bracket mounting foot	20 32 20
145	Motor bracket support piece	20 32 10D
146	Motor housing frame	19 23 10D
	Upper drive block cap (4) page 4)	03 09 15
	Bag of tools	08 50 01

SUMMARY OF CAUTIONS

1. The mix-unit should be installed in a damp-free place, away from any source of heat (explosive vapors). Mix-units driven by a non-explosion-proof electrical assembly should not be used in any area where there is a possible risk of paint vapor ignition.
2. Installation of the mix-unit, as well as any check, adjustment, or repair of any electrical component (motor, connections, etc..) must be carried out only by a fully qualified electrician. Installation must be in accordance with all Federal, State, and local regulations, and the mix-unit must be fully grounded.
3. All electrical connections should be fully covered at all times.
4. Protective covers should always be in position. They are provided to protect you against any possible risk of injury.
5. Before removing any protective covers, and prior to any maintenance or repair operation, make sure the switch is locked in the OFF position (unit fully disconnected, if possible).
6. The upper mix-shelves should be reserved for smaller cans, which are lighter, and thus safer, to handle.
7. Do not use dented cans. Check manually that the agitator blades turn freely, before placing cans in mix-unit.
8. Make sure that agitator lids are firmly secured before placing cans in the mix-unit.
9. Make sure that cans are securely in place before switching mix-unit ON.
10. Never overreach when placing cans in, or removing cans from the mix-unit.
11. Never use water to wash down the mix-unit.
12. Do not sit on the work table.

The manufacturer cannot be held responsible for any accident resulting from non-compliance with the cautions contained in this Manual or affixed to the mix-unit, nor in the case of a mix-unit modified without the prior knowledge and consent of the manufacturer.

IMPORTANT:

YOUR MIX UNIT IS FITTED WITH A FULLY APPROVED EXPLOSION-PROOF MOTOR. ANY REPAIRS MUST BE CERTIFIED IN CONFORMANCE WITH APPROVAL CONDITIONS.

BEFORE YOU CALL AN ELECTRICIAN TO INVESTIGATE A MOTOR PROBLEM, IT IS THEREFORE MOST IMPORTANT TO CALL FILLON PICHON USA INC. FOR THE APPROPRIATE INSTRUCTIONS : 401 431 1580

WARRANTY

FILLON PICHON USA, INC. warrants each new mix unit to be free from defects in material and workmanship under normal use and service.

FILLON PICHON USA, INC. will replace and/or repair any part of the mix unit which it determines is defective for a period of twelve (12) months after delivery of the mix unit to the original end user. Not included under the terms of this Warranty are any parts which require replacement due to normal wear and tear (belts, fuses, etc.).

All Warranty claims should be made by contacting the company which was responsible for selling the mix unit to the original end user. Under no circumstances should the mix unit or any part thereof be returned to the factory for inspection, replacement and/or repair without the express written consent of FILLON PICHON USA, INC.

This Warranty is expressly in lieu of all other warranties and representations express or implied, and all other obligations and liabilities on the part of FILLON PICHON USA, INC.

All electrical components of the mix unit furnished by FILLON PICHON USA, INC. but not manufactured by FILLON PICHON USA, INC. are warranted specifically by their respective manufacturers and FILLON PICHON USA, INC. makes no warranties with respect to these items.

This Warranty shall be valid for the Warranty period, as long as the mix unit has been properly installed or repaired by a fully qualified electrician or mechanic. The Warranty shall be void, if the mix unit has been subjected to unauthorized modification, misuse, neglect, accident or noncompliance with instructions in the service manual.

This Warranty is for the sole benefit of the original end user and is not assignable or transferable. The term "original end user" in this Warranty shall be deemed to mean that person or entity for whom the mix unit is originally installed.

EL FABRICANTE NO SE HACE RESPONSABLE DE ACCIDENTE ALGUNO QUE RESULTE POR NO HABERSE SEGUIDO LAS ADVERTENCIAS CONTENIDAS EN EL MANUAL DE SERVICIO O QUE ESTAN ADHERIDAS A LA UNIDAD DE MEZCLAR; NI TAMPOCO, SI SE HACE ALGUNO MODIFICACION A LA UNIDAD. DE MEZCLAR SIN EL PREVIO CONOCIMIENTO Y CONSENTIMIENTO DEL FABRICANTE.